

driade

2009



driade

DRIADE: A REFINED AESTHETICS OF LIVING

Driade is a complex project about refined aesthetics of living. In its multifaceted and eloquent catalogue, Antonia Astori's container systems dialogue with the furnishings of the Driade collection: while the former organize space and constitute its skeleton, the latter is a multilingual laboratory of contemporary design. Over the years, the catalogue has displayed and promoted a rich variety of research, poetics and international trends, portraying Driade as a constantly changing, one-of-a-kind aesthetic experiment. Today, we can clearly see what has implicitly made the difference right from the outset: a predisposition to listening, alertness, and close attention to signs coming from overseas in order to develop the ones that can be translated into familiar pieces of furniture. The modular systems, in their abstract dimension of organizing grids, have always been a kind of architecture capable of absorbing and redistributing the impact of different languages. Today they have become more precious, often assuming the form of furnishings defined with essential rigour. But they still guide the flow of languages that shakes the customs of traditional living. This permeability to differences makes the Driade project a highly up-to-date proposition that is open to the future. It rejects the levelling of globalization, but senses the vitality and freshness arising from a multiplication of places where ideas are developed and products are produced. Driade multiplies local voices, crosses borders, and opens up to different influences coming from various levels of culture. The guarantee lies in high quality standards, starting from the designers' proposals right through to production and communication. Paradoxically, the more Driade grows and evolves, accommodating diverse articulations in its catalogue, the simpler it becomes, clarifying and laying bare the internal paths that make it possible to create organic and coherent areas of taste. Driade's many personalities are organized around a system, and each lives its own autonomous and complete life, which can be either orderly or unconventional, neo-bourgeois or revolutionarily aristocratic depending on the sensitivity and taste of whoever is choosing. Each person finds his or her own individual Driade. The extent of the tonal range, the variety of accents, and the potential to introduce dissonances that accentuate the harmony of the whole: these are the elements that differentiate Driade in the apparently elementary microcosm of living and habitation. Like art, the impassioned Driade project embraces listening and dialogue, interpreting the act of living as an open work. As a result, living becomes a subtle and refined pleasure whose indifference to form detracts nothing from its preciousness.

Vittorio Locatelli

driade s.p.a. Via Padana Inferiore 12 cap. 29012 Fossadello di Caorso (PC) Italy
T. +39 0523 818618 - F. Italy +39 0523 822628 - F. Export +39 0523 822360
e-mail Italy: com.it@driade.com; e-mail Export: export@driade.com, www.driade.com



Photos
Santi Calceca

Systems
Repro's

Printed
Arti Grafiche Mario Bazzi
2009

The paint at page 23, is drawn from "I dipinti dell'Orsay" by Robert Rosenblum, Magnus, 1991. The editors remain available for eventual assignee.



LUCAS armchair, SALOMONICA table, FLOATING SOFA by Oscar Tusquets

FIREWORKS lamp, VIRGO bookcase by Xavier Lust - LISA armchair by Laudani&Romanelli



LIVING IN CLOVER lamp by Jason Ong - TAKU table, ZAZA armchair by Naoto Fukasawa



LUCAS armchair by Oscar Tusquets - TIGO table by Marco Zanuso jr., CICLO bookcase by Jonathan Olivares



OYSTER I, II tables by Marco Zanuso jr. - OSCAR BON armchair by Philippe Starck

HOFF bed and sofa, MAK table, GRAPE I, II lamps by Giuseppe Chigiotti





OYSTER I, II tables by Marco Zamuso jr. - THE EMPIRE lamp by Ninchi & Locatelli

LYBRA table by Elliott Littmann - MISS LACY armchair by Philippe Starck



MONSEIGNEUR *by Philippe Starck*



ACATE by Borek Sipek



MOOR(e) by Philippe Starck with Eugeni Quillet



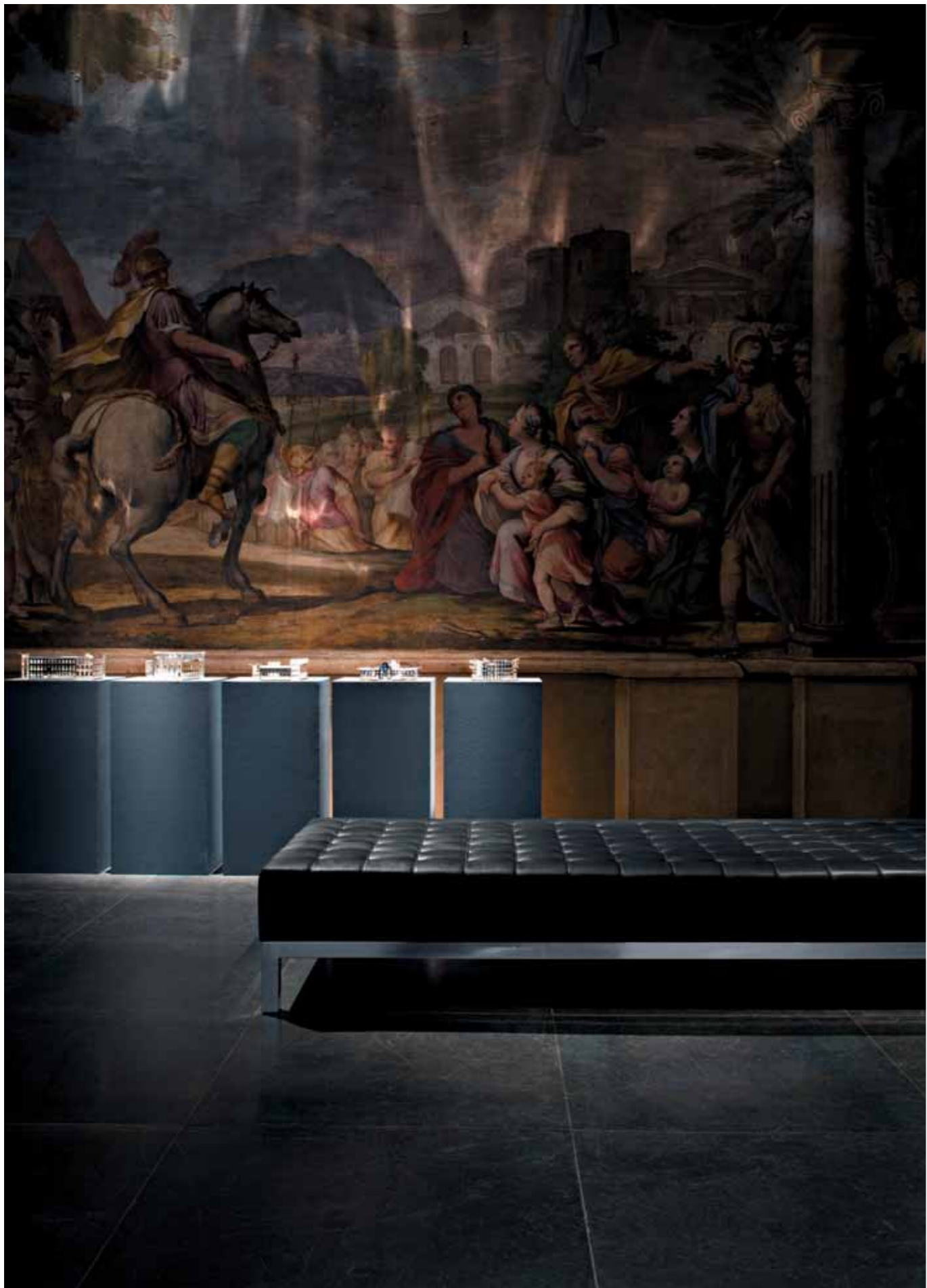
HALL by Rodolfo Dordoni



HALL sofa by Rodolfo Dordoni - EILEEN bookcase by Antonia Astori



HALL dormeuse by Rodolfo Dordoni - EILEEN bookcase by Antonia Astori



DIVINA by Fabio Novembre

Alexandre Cabanel
Naissance de Venus
1863



DIVINA by Fabio Novembre

DRIADE 2009



MOOR(e) P.17

2009 by Philippe Starck
Armchair. Base in polished stainless steel casting and swivel white chair in fiberglass and covering in quilted full-grained Matisse white colour leather.
Indoor use only.
W. 99 D. 99 H. 96; seat H. 44,5



OSCAR BON P.8

2004 by Philippe Starck
Monobloc easychair with fibercarbon shell in black colour.
Indoor use only.
W. 56 D. 65 H. 78; seat H. 45



A TABLE FOR TWO P.11

2009 by Miki Astori
Table. Base and top in embossed die-casting aluminium white painted. Column in aluminium white painted.
Indoor use only.
Ø 60 H. 73



HOTBOX P.11

2009 by Miki Astori
Cabinet. Internal structure, equipped with shelves and drawer, in wooden conglomerate with ebonized teak finish. External shoulders and folders in ebonized aluminium silver colour. Feet height adjustable.
Indoor use only.
W. 71 D. 50,3 H. 210



OYSTER I, II P.8-9; 12-13

2009 by Marco Zanuso Jr.
Table and small table. Structure and top in polished stainless steel. Thickness 2mm.
Indoor use only.
W. 60 D. 60 H. 72, W. 40 D. 40 H. 49,6



TIGO P.7

2009 by Marco Zanuso Jr.
Table. Base and top in wooden conglomerate with ebonized teak finish.
Indoor use only.
W. 85 D. 85 H. 73



FLOATING SOFA P.4-5

2009 by Oscar Tusquets
Sofa. Padding structure. Back and armrests with snug support level in mahogany wood and cushions. Fixed cover in white quilted leather.
Indoor use only.
W. 238 D. 81,5 H. 78; seat H. 41; armrests H. 61



SALOMONICA P.4-5

2009 by Oscar Tusquets
Table. Cast iron structure painted in black anthracite colour. Round or square top in transparent th.12 mm float glass. Feet in black painted steel.
Indoor use only.
Ø 80; Ø 106, Ø 120 H.72
W. 80 D. 80, W. 100 D. 100, W. 120 D. 120 H. 72



LUCAS P.4; 7

2009 by Oscar Tusquets
Armchair. Structure in polished stainless steel. Armrests in steel sheet covered with red leather. Padding seat and back covered with red Scala velvet.
Indoor use only.
W. 60 D. 56 H. 81; seat H. 47



LISA P.1; 2; 5; 11; 28

2009 by Laudani & Romanelli
Armchair. Padding structure covered with Loira velvet available in these colours: black or Bordeaux or in white full grain leather.
Indoor use only.
W. 73 D. 66,5 H. 72



SOURCE P.1; 2; 28

2009 by Xavier Lust
Table. Base and top in die-casting polished aluminium.
Indoor use only.
Ø 70 H. 73



VIRGO P.1; 2; 4-5; 28

2009 by Xavier Lust
Bookshelf. Structure and shelves in mirror polished stainless steel or in anodised aluminium black anthracite.
Indoor use only.
W. 125 D. 30 H.200



ZAZA P.6

2009 by Naoto Fukasawa
Armchair. Wooden structure in ebonized black colour finish. Padding seat and back with fixed cover in black leather.
Indoor use only.
W. 50,5 D. 54,2 H. 83; seat H. 45; armrests H. 67



TAKU P.6

2009 by Naoto Fukasawa
Table. Structure and top in wooden conglomerate with ebonized teak finish.
Indoor use only.
W. 200 D. 90 H. 72



CICLO P.7

2009 by Jonathan Olivares
Turning bookshelf in wooden conglomerate with ebonized teak finish.
Indoor use only.
W. 80 D. 69 H. 164



MAK P.9; 10

2009 by Giuseppe Cbigiotti
Small table on castors. Structure and shelves made of wooden conglomerate in ebonized teak finish.
Indoor use only.
W. 50 D. 80 H. 81



HOFF P.9; 10

2009 by Giuseppe Cbigiotti
Sofa. Lasb wood structure. Padding in polyurethane foams. Feet in ebonized wood and tarnished bronze. Fixed cover in quilted full-grained white or black leather.
Indoor use only.
W. 220 D. 88 H. 77; seat H. 40; armrests H. 65



HOFF P.8-9

2009 by Giuseppe Cbigiotti
Double bed composed by two different dimensional beds for mattresses W. 170 and W. 180 and by a standard fixed headboard for wall implantation. Wooden structure. Padding in polyurethane foams. Feet in ebonized wood and tarnished bronze. Fixed cover in quilted full-grained white leather. Indoor use only.
Bed: W. 180/190 D. 210 H. 27, Headboard: W. 238 D. 14 H. 76

DRIADE 2008

**MONSEIGNEUR**

2008/2009 by Philippe Starck
Easy chair. Structure with front legs/armrests in stainless steel casting and back legs in solid ebonized wood. Seat and back in polyurethane foams with fixed cover in capitonné quilted full-grained leather.
Indoor use only.
W. 53 D. 57 H. 90; seat H. 47; armrests H. 67

**MONSEIGNEUR**

P.14-15

2008/2009 by Philippe Starck
Armchair. Structure with front legs/armrests in stainless steel casting and back legs in solid ebonized wood. Seat and back in polyurethane foams with fixed cover in capitonné quilted full-grained leather.
Indoor use only.
W. 62 D. 67 H. 82; seat H. 41; armrests H. 60

**MONSEIGNEUR**

P.14-15

2008/2009 by Philippe Starck
Sofa. Structure with front legs/armrests in stainless steel casting and back legs in solid ebonized wood. Seat and back in polyurethane foams with fixed cover in capitonné quilted full-grained leather.
Indoor use only.
W. 201 D. 82 H. 82; seat H. 41; armrests H. 61

**MONSEIGNEUR**

P.14-15

2008 by Philippe Starck
Pouf. Structure in stainless steel casting. Upholstery in polyurethane foams with fixed cover in in capitonné quilted full-grained white leather.
Indoor use only.
W. 112 D. 112 H. 41

**MOOR(e)**

P.17

2008 by Philippe Starck
Armchair. Base in polished stainless steel casting and swivel black chair in fiberglass and covering in quilted full-grained Matisse black colour leather.
Indoor use only.
W. 99 D. 99 H. 96; seat H. 44,5

**ACATE**

P.16

2008 by Borek Sipek
Coatbanger. Structure in matte brass. Leaves in polished brass.
Indoor use only.
W. 48 D. 42 H. 176

**VIRGINIA**

2006 by Antonia Astori
Writing-table. Structure in wooden conglomerate with ebonised teak finish.
Indoor use only.
W. 162 D. 60 H. 93; top H. 75

**EILEEN**

P.18, 20-21

2006 by Antonia Astori
Bookcase. Structure in wooden conglomerate with ebonised teak finish.
Indoor use only.
W. 80 D. 29,5 H. 192,5

**COTTON**

2006 by Antonia Astori
Console TV/DVD. Structure in wooden conglomerate with ebonised teak finish. Indoor use only.
W. 187,5 D. 60 H. 51

**FLORENCE**

2008 by Antonia Astori
Cabinet. Structure in wooden conglomerate with ebonised teak finish.
Indoor use only.
W. 135 D. 47,5 H. 92,2

**FAY**

2008 by Antonia Astori
Cabinet. Structure in wooden conglomerate with ebonised teak finish.
Indoor use only.
W. 135 D. 47,5 H. 75

**CHESTER**

2008 by Antonia Astori
Chest of drawers. Structure in wooden conglomerate with ebonised teak finish.
Indoor use only.
W. 135 D. 47,5 H. 39,5

**DIVINA**

P.23

2008 by Fabio Novembre
Sofa. Base in stainless steel structure. Padding in polyurethane foams with fixed cover in full-grained quilted black leather. Woman-shaped back in polyurethane with black elastomer finish. Limited edition 1/100.
Indoor use only.
W. 240 D. 105 H. 143; seat H. 43

**DIVINA**

P.22

2008 by Fabio Novembre
Island seat. Base in stainless steel structure. Padding in polyurethane foams with fixed cover in full-grained quilted black leather.
Indoor use only.
W. 240 D. 105 H. 43

**DIVINA**

2008 by Fabio Novembre
Pouf. Base in stainless steel structure. Padding in polyurethane foams with fixed cover in full-grained quilted black leather.
Indoor use only.
W. 105 D. 105 H. 43

**HALL**

P.18-19, 20

1992 by Rodolfo Dordoni
Three-seater sofa. Structure in padding wood. Fixed cover in quilted capitonné full-grained leather or velvet Loira C.
Indoor use only.
W. 230 D. 84 H. 75; seat H. 43

**HALL**

P.18-19

2008 by Rodolfo Dordoni
Left side element (photo)/right. Structure in padding wood. Fixed cover in quilted capitonné full-grained leather or velvet Loira C.
Indoor use only.
W. 139 D. 83 H. 75; seat H. 43

**HALL**

P.21

2008 by Rodolfo Dordoni
Left day-bed (photo)/right. Structure in padding wood. Fixed cover in quilted capitonné full-grained leather or velvet Loira C.
Indoor use only.
W. 139 D. 77 H. 75; seat H. 43

